



# **Animals, Health and Resilience**

Our responsibility for the land and the diverse role of the animals

**Deepen Biodynamics**  
**4th – 25th September 2023**

Alysoun Bolger: [alysoun.bolger@demeter.net](mailto:alysoun.bolger@demeter.net)  
Jean-Michel Florin: : [jean-michel.florin@goetheanum.ch](mailto:jean-michel.florin@goetheanum.ch)  
Johannes Wirz: : [johannes.wirz@goetheanum.ch](mailto:johannes.wirz@goetheanum.ch)



# **On Pollinators and the Honeybees**

Johannes Wirz

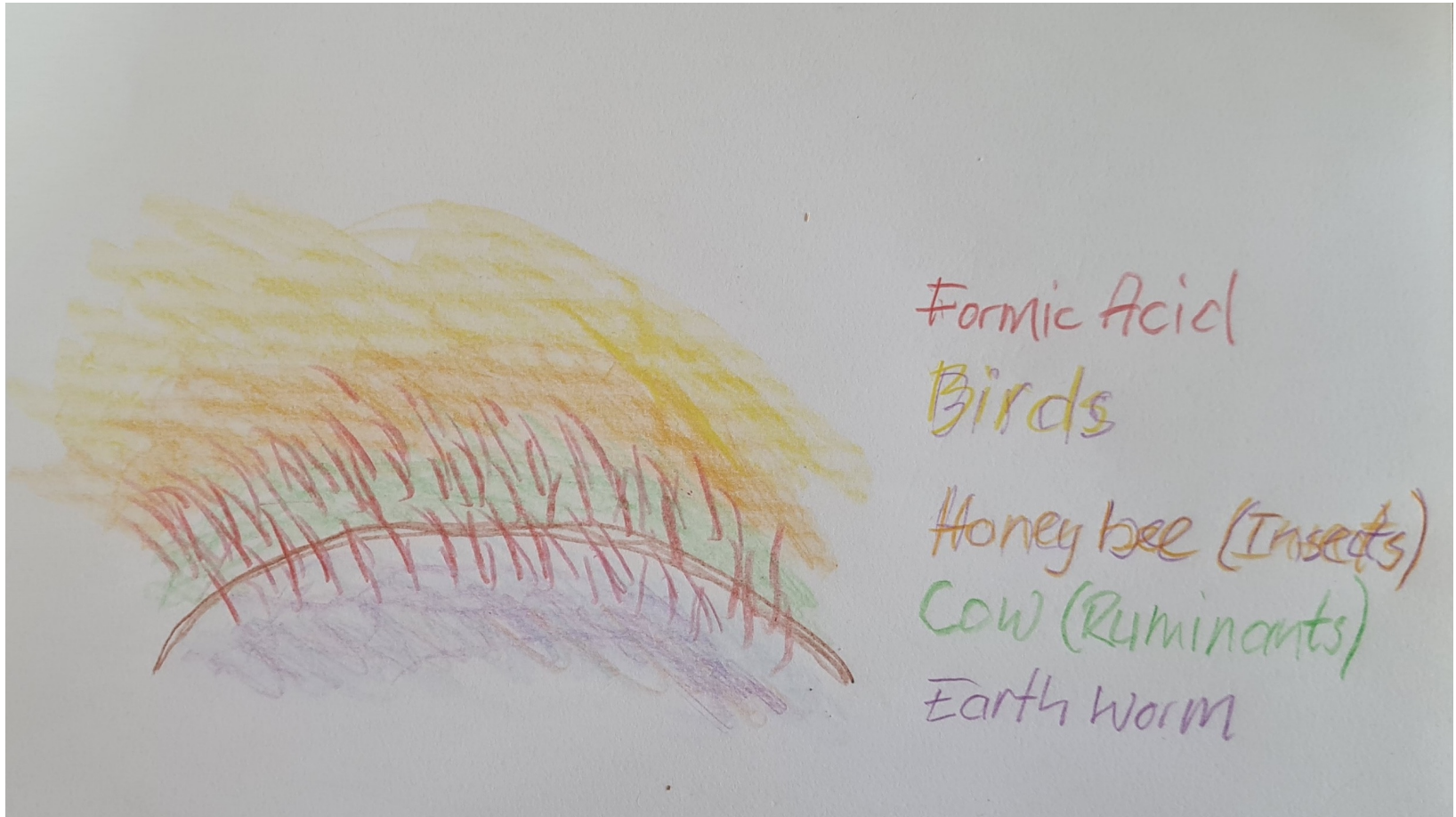


# Four Qualities

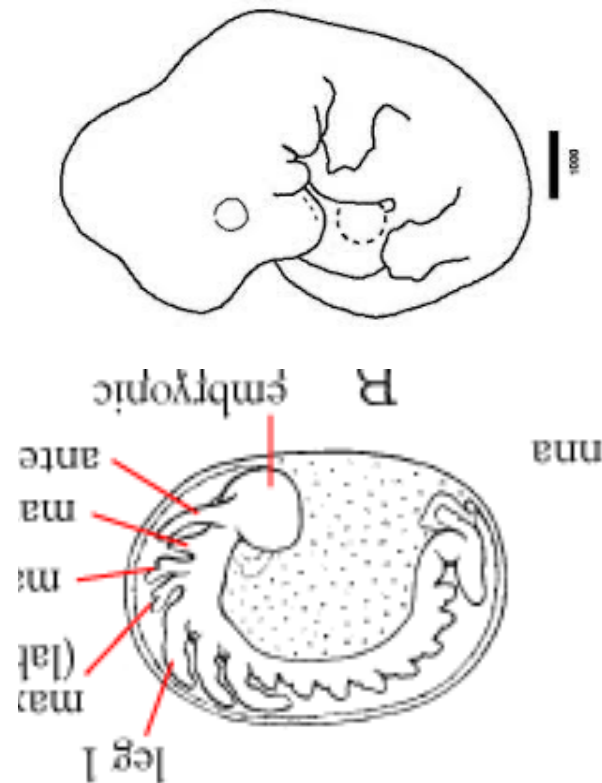




# Formic Acid, Bee Venom and Coherence

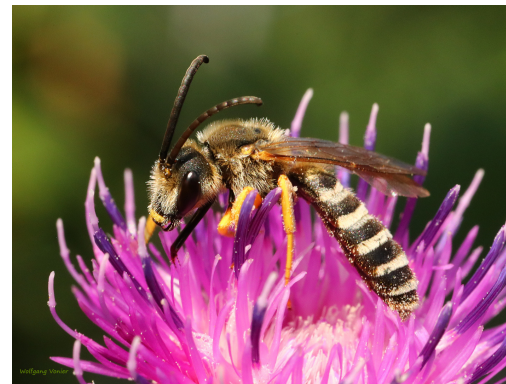


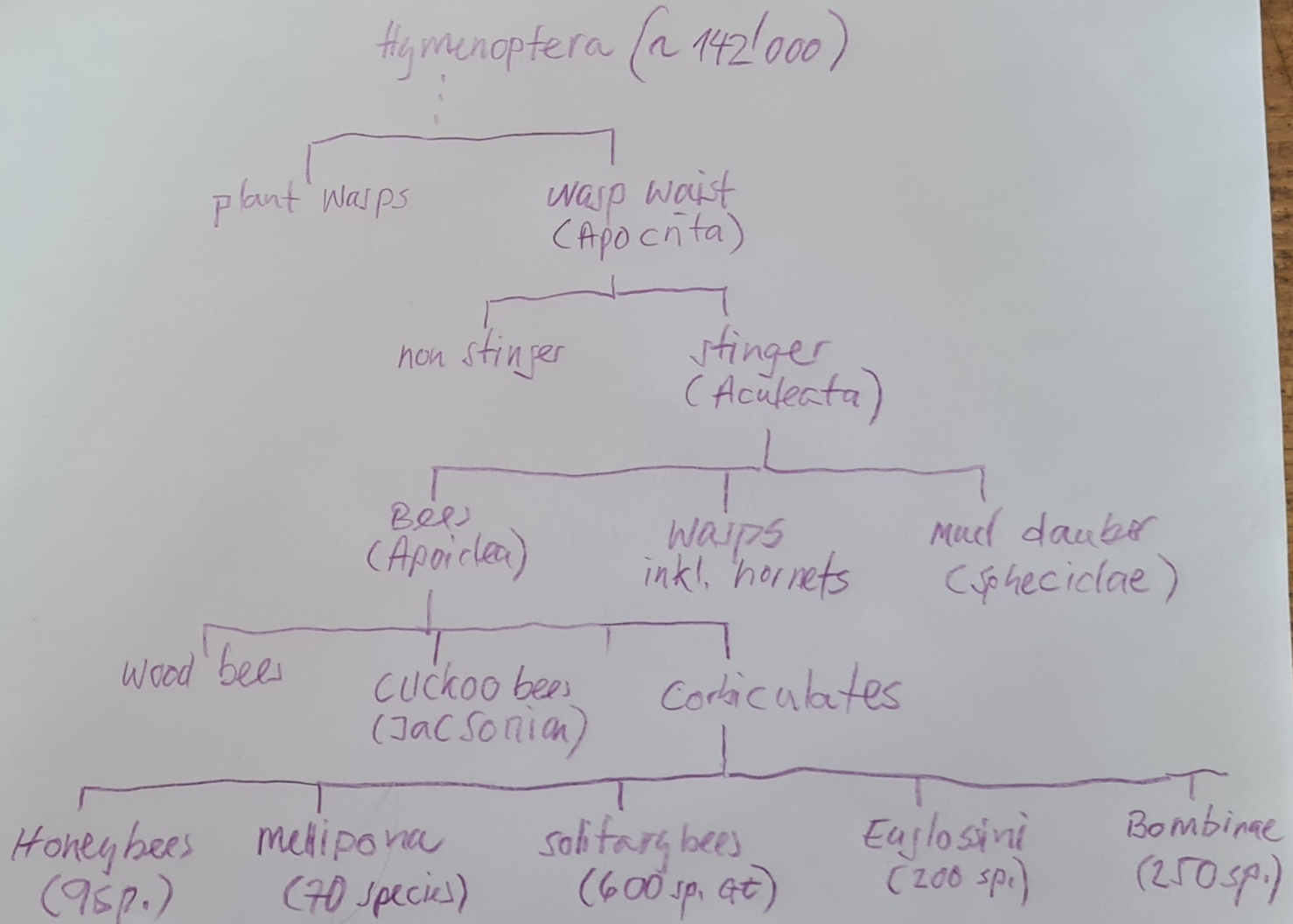
# Vertebrates & Insects: Inside Out





# Pollinators







## Break out session

- *What can we do to secure life and survival of all the different pollinators?*
- *What is the difference between the many pollinators and the honeybees?*
- *Would you like to have honeybees on your farm? How, do you think, could this become reality?*





Sektion für Landwirtschaft  
Section for Agriculture  
Section d'Agriculture  
Sección de Agricultura

Break



# Honeybees

- The single bee is an insect, the colony as whole rather a mammal.
- 80 percent of all flowering plants depend on pollination, 80 percent of those need the honeybee, exclusively.
- some remarks on the competition of solitary bees and honeybees.
- multiple flower visits increase quality and quantity of fruits, berries and vegetables
- Bring flowers on your farms!

# History of the relation of bees and man









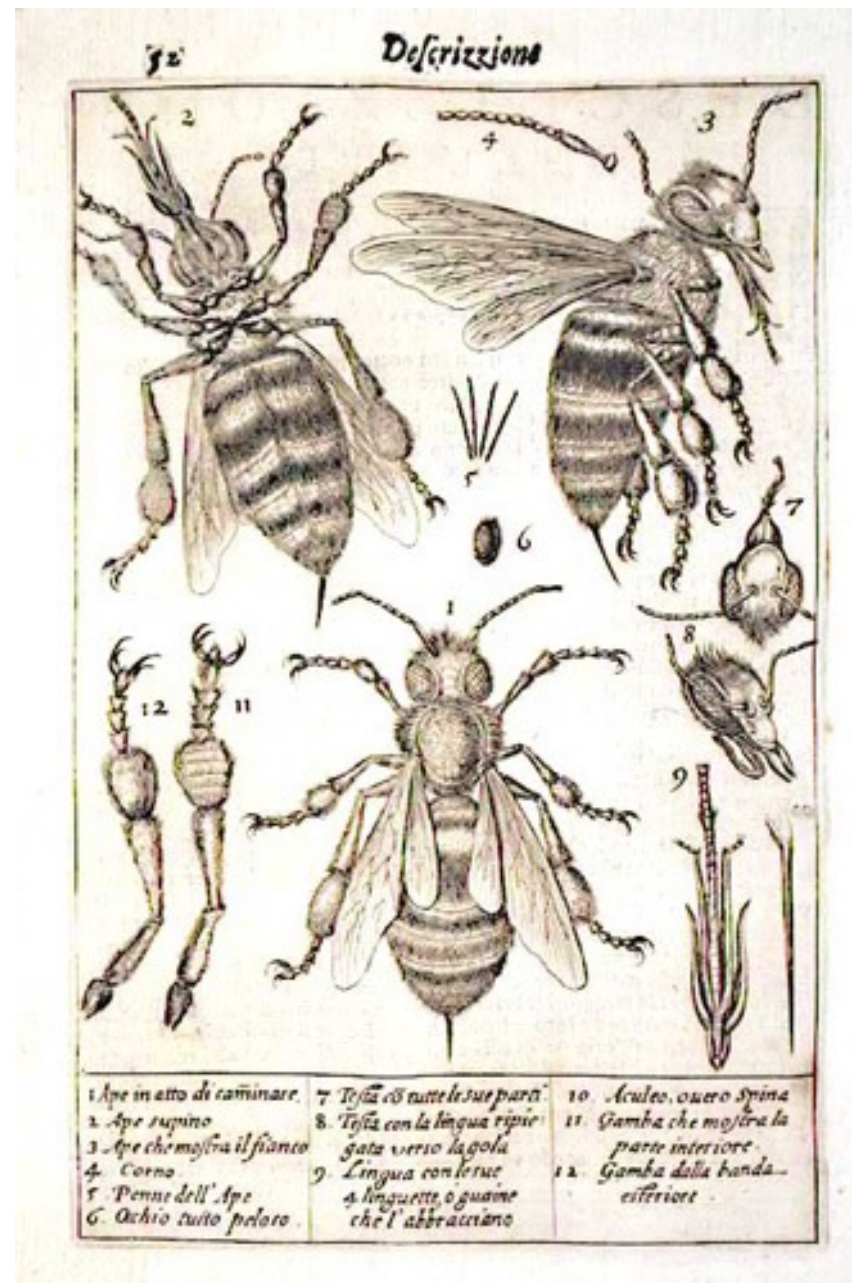
Sektion für Landwirtschaft  
Section for Agriculture  
Section d'Agriculture  
Sección de Agricultura





ktion für Landwirtschaft  
Section for Agriculture  
Section d'Agriculture  
Sección de Agricultura





Sektion für Landwirtschaft  
 Section for Agriculture  
 Section d'Agriculture  
 Sección de Agricultura

Francesco Stelluti 1630



10.11.23





## Introduction to Homework Exercise

*Please, read the short text about the burning candle.  
Share insights an experiences. Reflect on the idea that  
life in general relies on light and darkness. Does this  
hold true for oneself?*