

Rhythms and rituals - VIII

Online course
with Jean-Michel Florin

Section for Agriculture at the Goetheanum

Hügelweg 59, 4143 Dornach, Switzerland

sarah.sommer@goetheanum.ch

<https://www.sektion-landwirtschaft.org/en/training/deepen-biodynamics/deepening-courses>

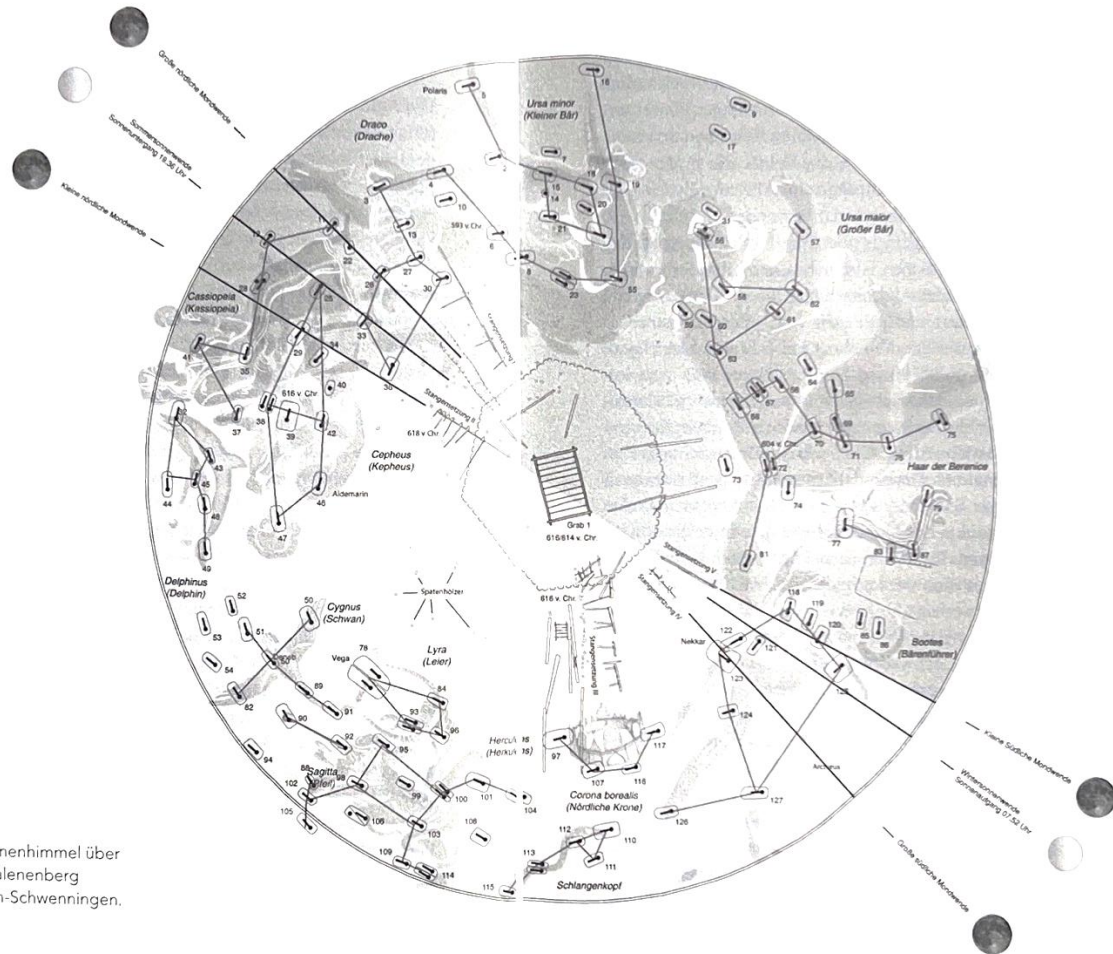
Breathing of the Earth



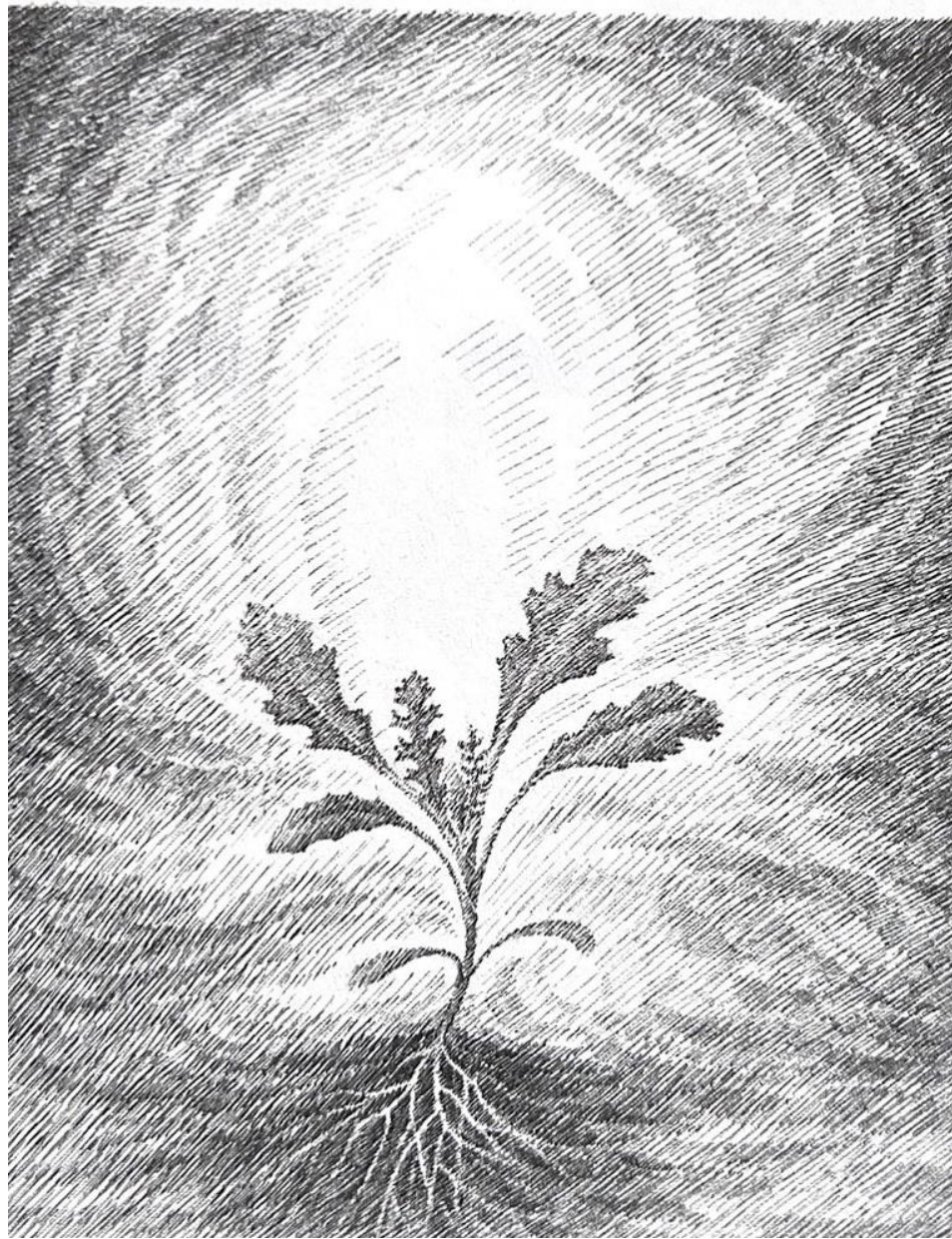
GA 229 TAFEL 4

DORNACH, 7. OKTOBER 1923

Cosmos and human beings







Goetheanum
Sektion für Landwirtschaft
Section for Agriculture

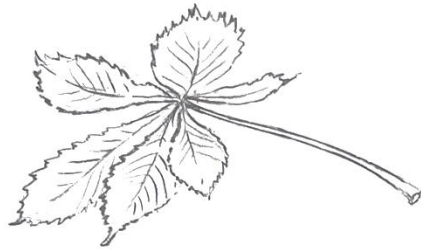


Fig. 126. Four stages in the withering of a horse chestnut leaf. [charcoal]



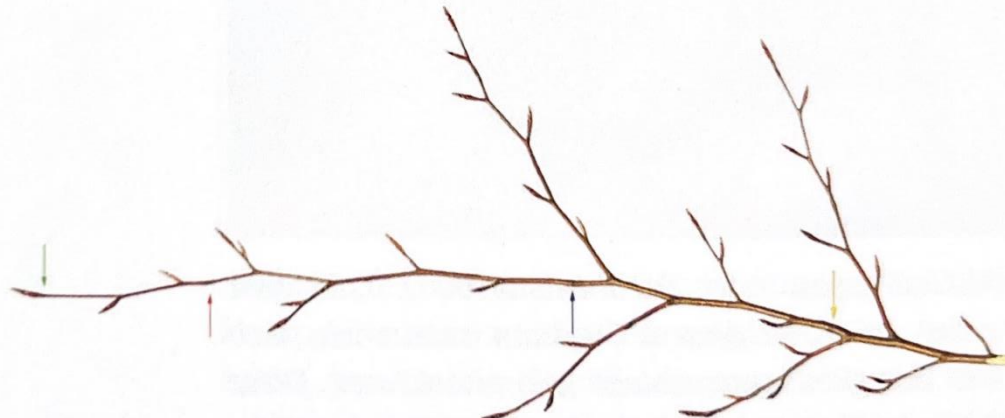
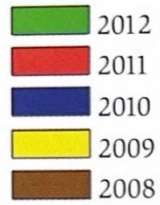
Fig. 42. Beech buds in January. Compare this drawing with Figs. 44 and 45. [pen]



Fig. 44. Beech twig unfurling in spring. [pencil]



Fig. 121. Beech twig in autumn. [pencil]



Lunar rhythms in the shape of organs, analogous to those of the trunk diameters described above, had already been discovered by Edwards (1982), thanks to a meticulous series of photographic observations of tree buds. With the help of a shape factor developed in projective geometry, each bud, whether it be spherical, elliptical or ovoid, can be characterized by a unique parameter Lambda. This shape, therefore lambda, not only changes radically at budbreak, but varies subtly around the characteristic value through the bud's existence, from formation to budbreak.

The phenomenon consists of a rhythmical elongation and relaxation of the buds through the winter, as though there was breathing or a subtle heartbeat, already hinting at tiny movements of opening and closing. Edwards also indicates that this fluctuation in shape is synchronized for some species with the position of the moon relative to the sun (synodic rhythm) but for others with the alignment of the moon with certain planets (e.g. Saturn for beech *Fagus sylvatica*, Mars for oak *Quercus sp.*).

Pulsation of buds and planetary alignments

from the
Egg-Shape to the Vortex

[Lawrence Edwards,

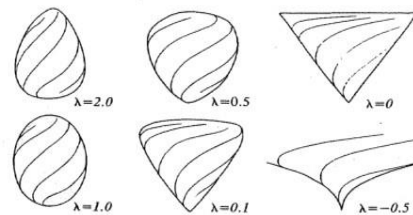


Abb. 62 Der einfache Prozeß der Verkleinerung von λ bedeutet für die Knospe, daß sie eine «Öffnungs»-Geste durchläuft.

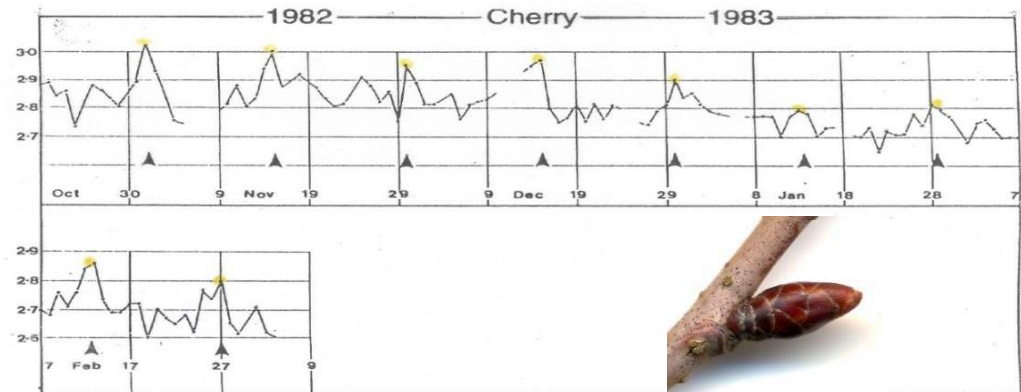
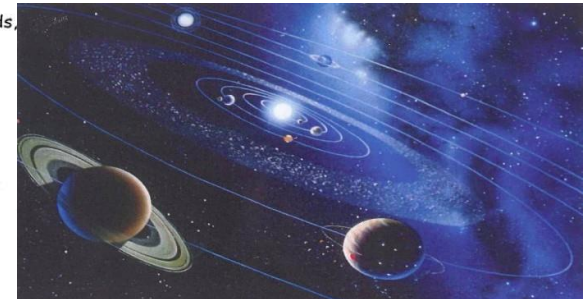
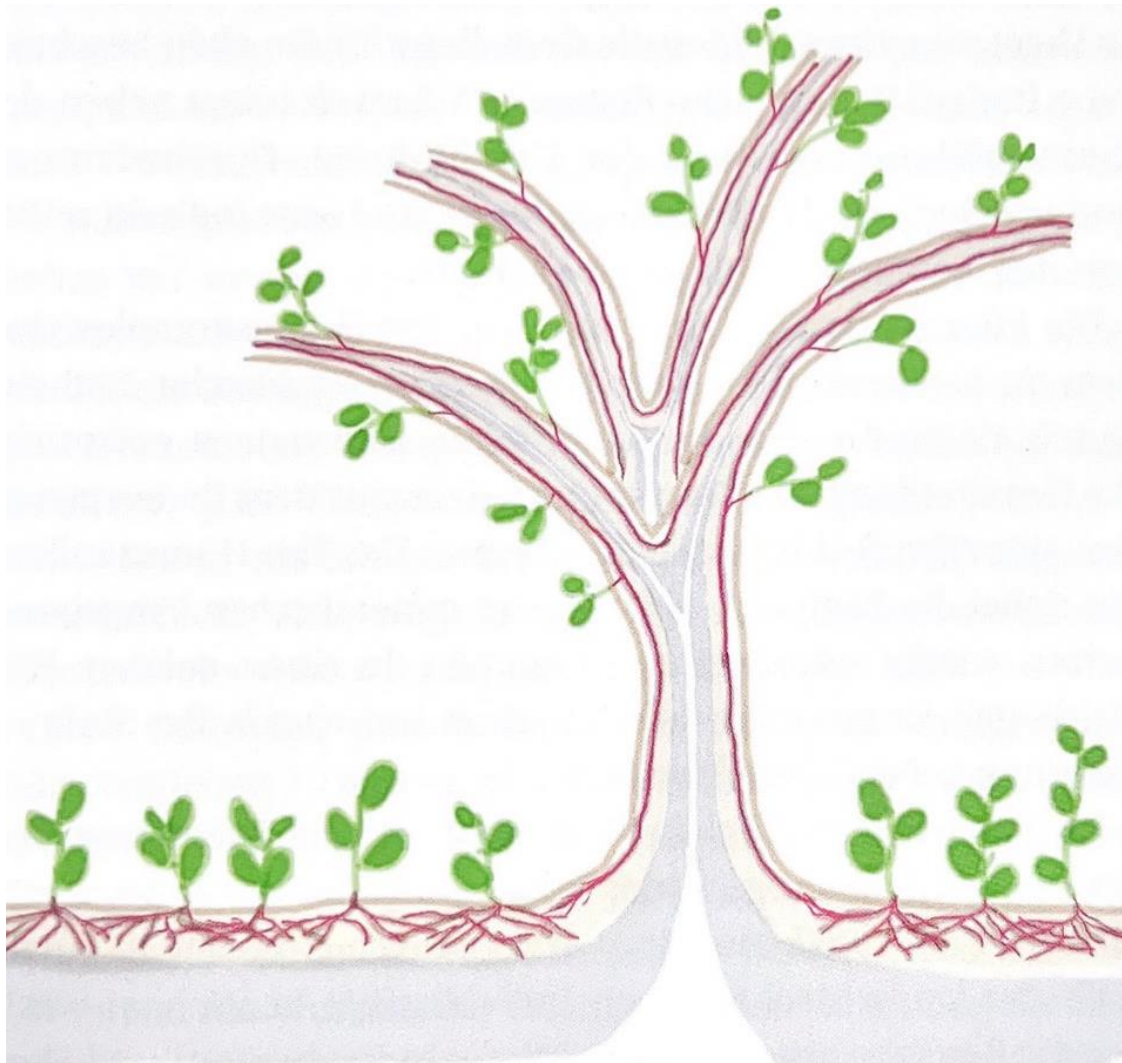
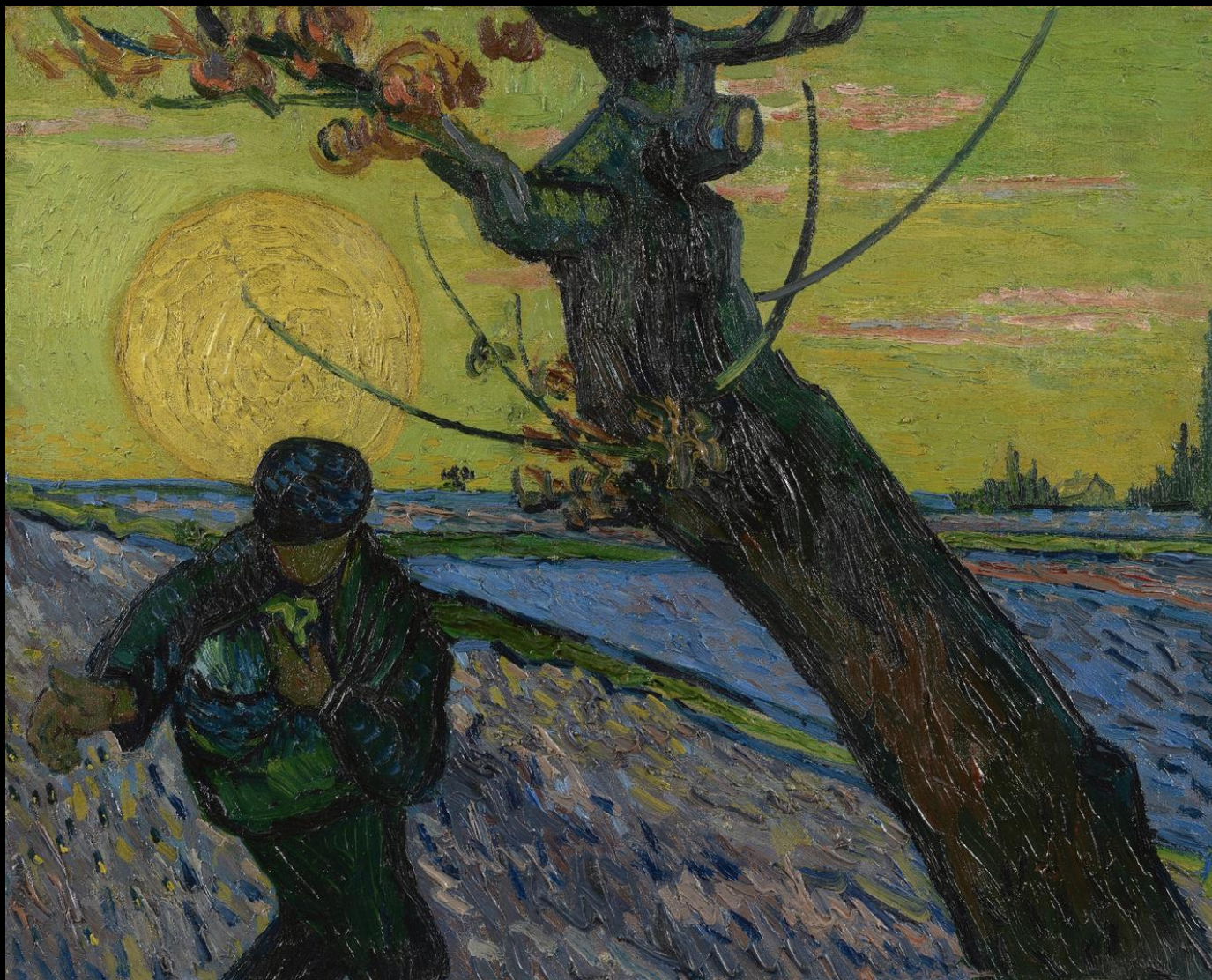


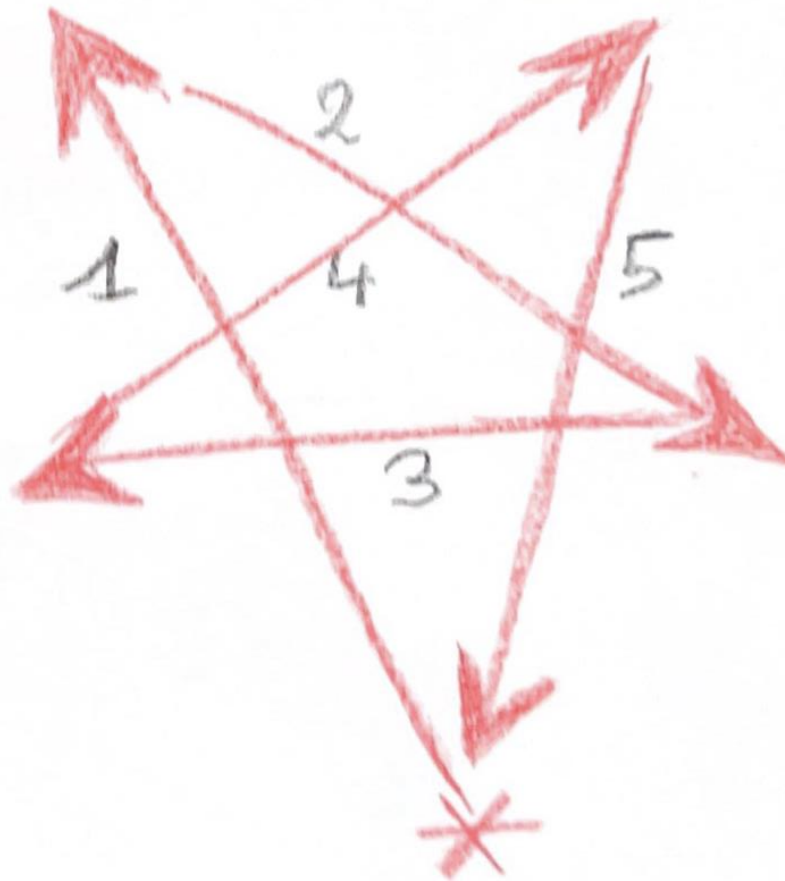
Figure 115. Mean λ values for Cherry leaf buds, winter 1982–83, with corresponding alignments of Sun and Moon. [L. Edwards 1993]











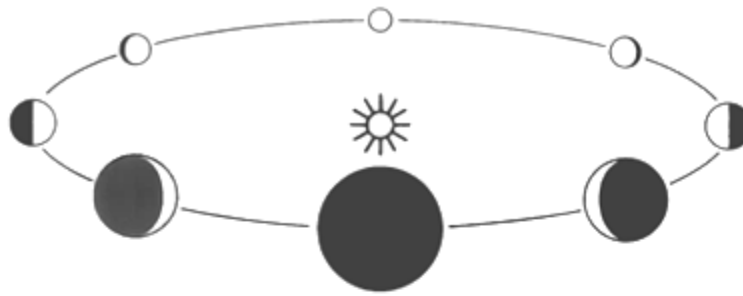


Fig. 103 Phasen- und Größenwechsel der Venus bei einem synodischen Umlauf.



Fig. 99 und 100
Verteilung und
Aufeinanderfolge der
Venus-Sonnen-Konjunktionen
im Tierkreis 1952—1961.

Fig. 99

Obere Konjunktionen
1 24. Juni 1952
2 30. Januar 1954
3 1. September 1955
4 14. April 1957
5 11. November 1958
6 22. Juni 1960



Fig. 100

Untere Konjunktionen
1' 13. April 1953
2' 15. November 1954
3' 22. Juni 1956
4' 18. Januar 1958
5' 1. September 1959
6' 11. April 1961

Tafel X *Geozentrische Venusbahn 1960—1968* entsprechend Tafel IX. Die Zahlen geben die Stellung beim jeweiligen Jahresbeginn an. Am äußeren Rand Sternbilder-Richtungen. — Der gestrichelte Kreis gibt die Sonnenbahn an; sein Radius ist gleich 1 Astron. Einheit.

Thank you!

Section for Agriculture at the Goetheanum

Hügelweg 59, 4143 Dornach, Switzerland

sarah.sommer@goetheanum.ch

<https://www.sektion-landwirtschaft.org/en/training/deepen-biodynamics/deepening-courses>

Sources

Bastiaan Baaan, Von der Naturreligion zum Sakrament, Urachhaus, 2012

Margaret Colquhoun & Axel Ewald, New eyes for plants, Hawthorn press. 1996

Jan Albert Rispens Baume verstehen lernen. SchneiderEditionen. 2014

Van Gogh

Georges de la Tour

Section for Agriculture at the Goetheanum

Hügelweg 59, 4143 Dornach, Switzerland

sarah.sommer@goetheanum.ch

<https://www.sektion-landwirtschaft.org/en/training/deepen-biodynamics/deepening-courses>