

Agri-Culture: Rhythms and Rituals – III

Understanding the soul aspect of the earth

Online course
with Jean-Michel Florin & Eduardo Rincón

Section for Agriculture at the Goetheanum

Hügelweg 59, 4143 Dornach, Switzerland

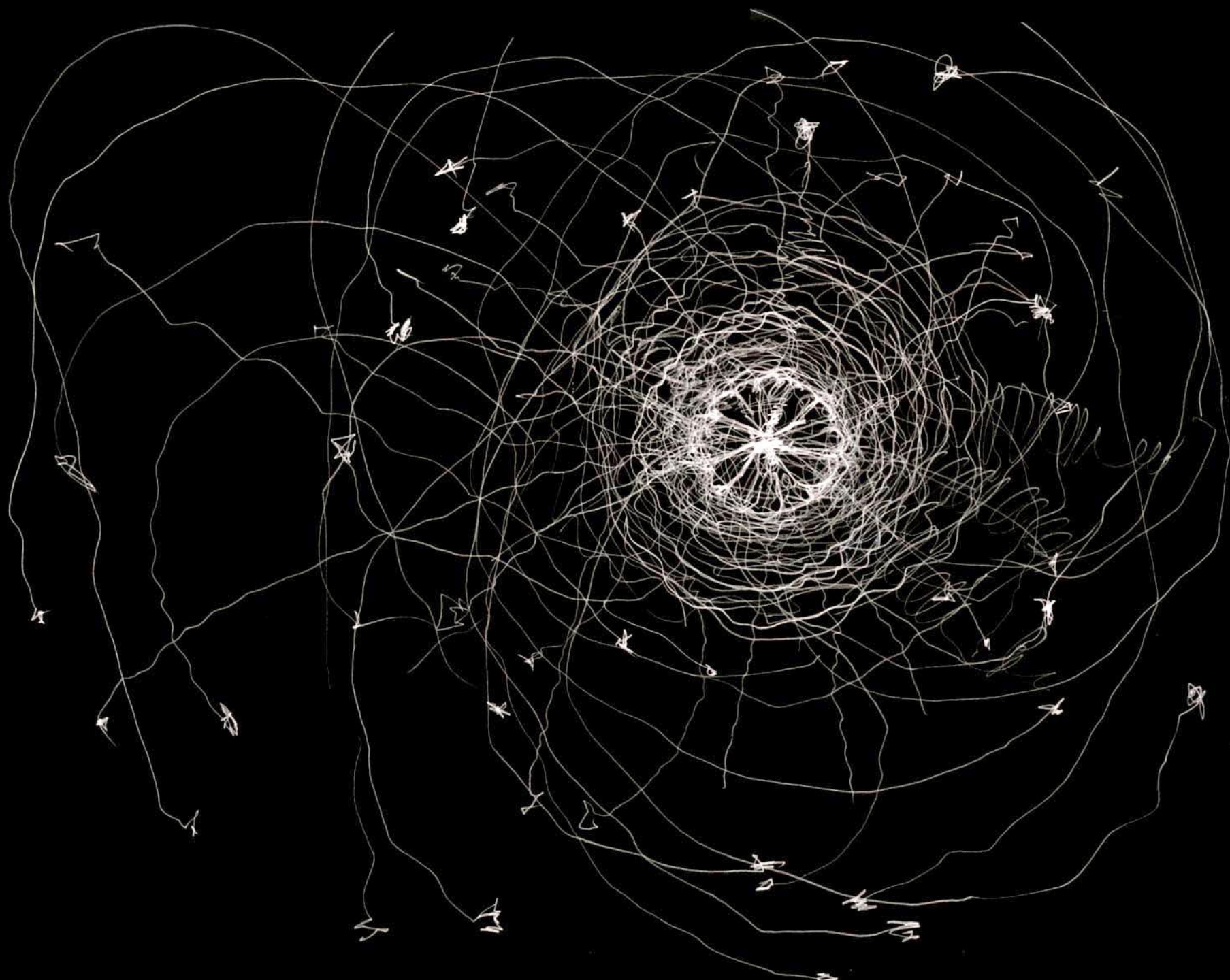
sarah.sommer@goetheanum.ch

<https://www.sektion-landwirtschaft.org/en/training/deepen-biodynamics/deepening-courses>

The stars once spoke to man
It is world destiny
that they are silent now.

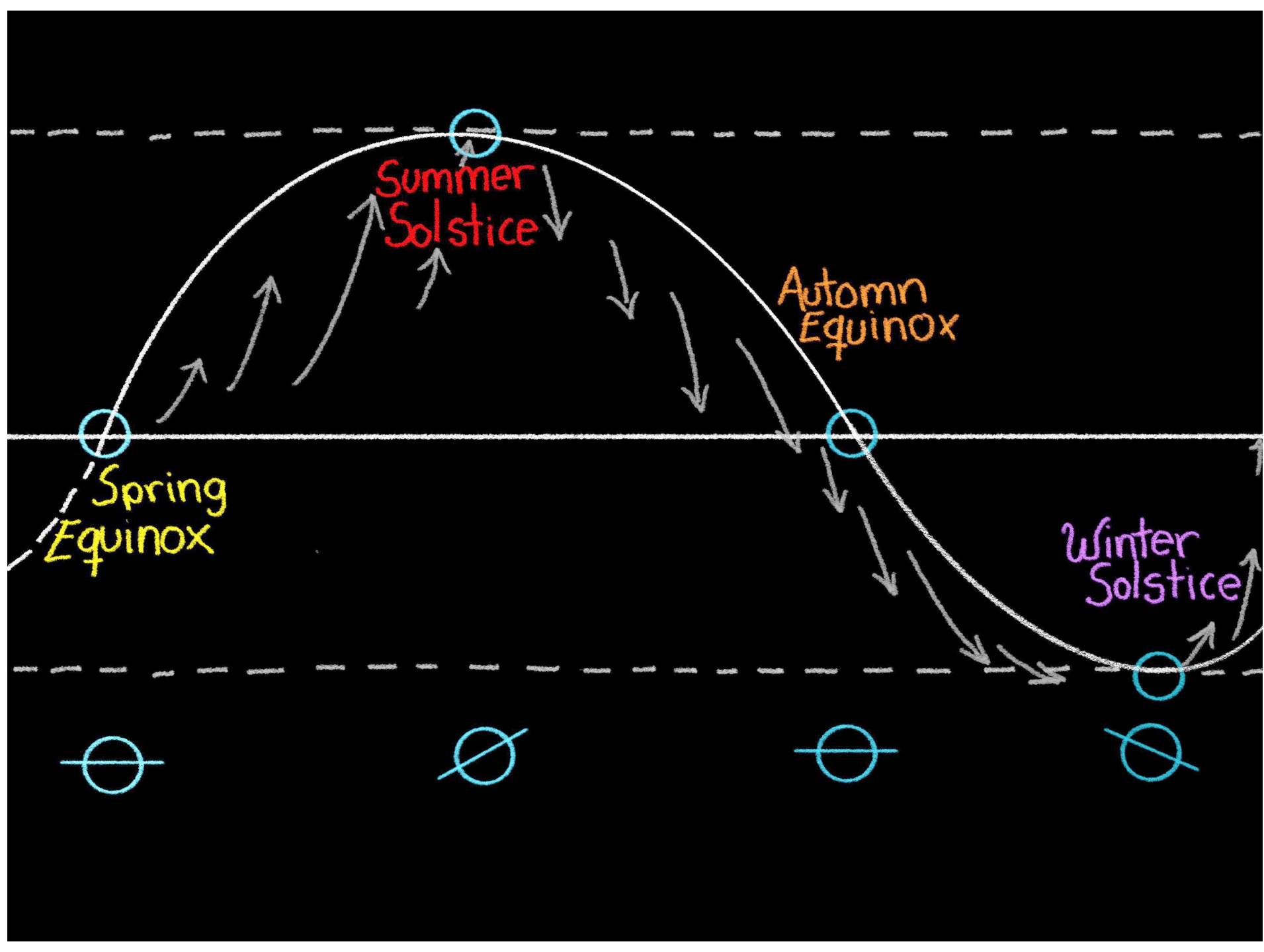
To be aware of the silence
can become pain for earthly man,
but in the deepening silence
there grows and ripens
what man speaks to the stars

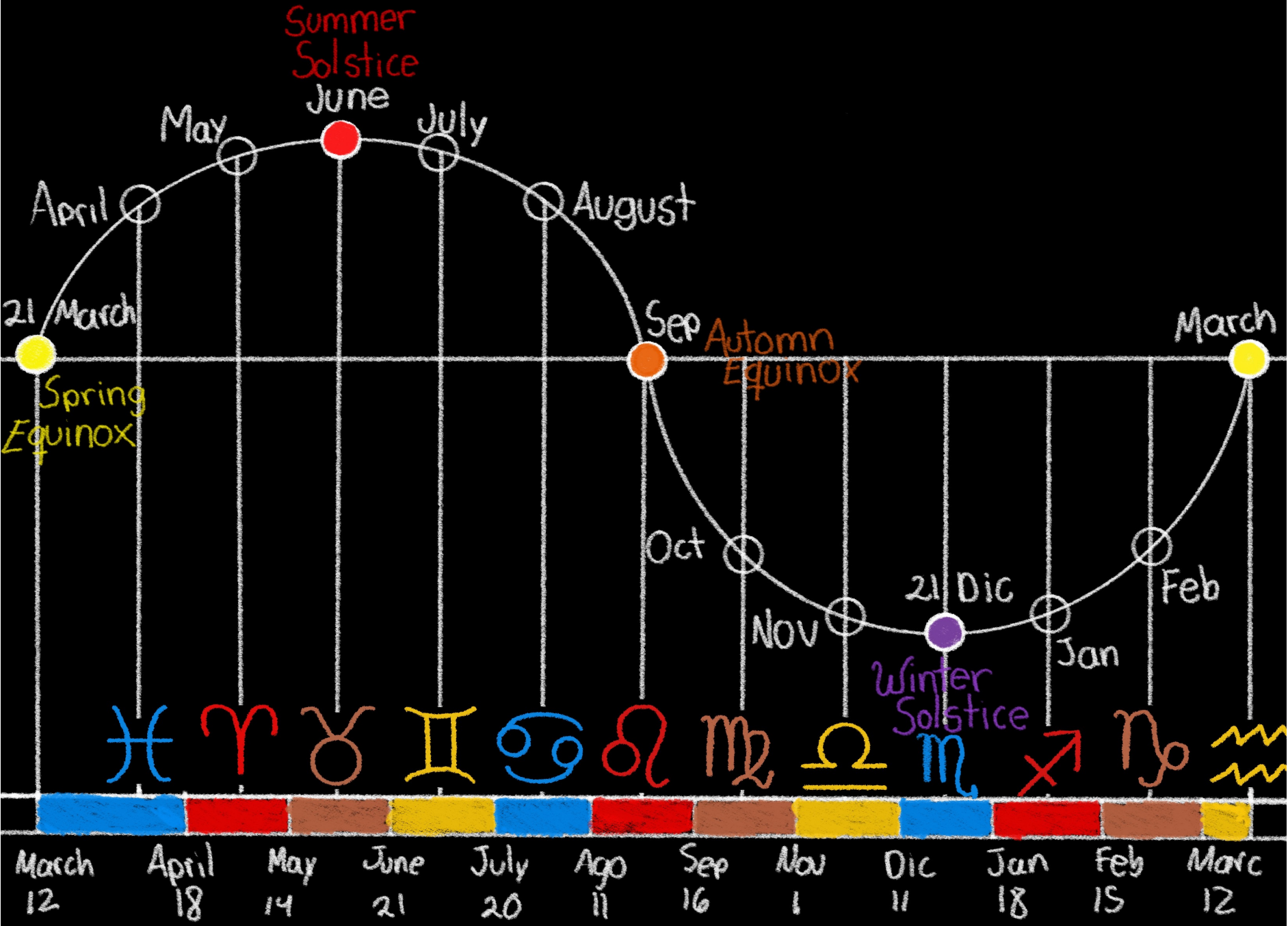
Rudolf Steiner







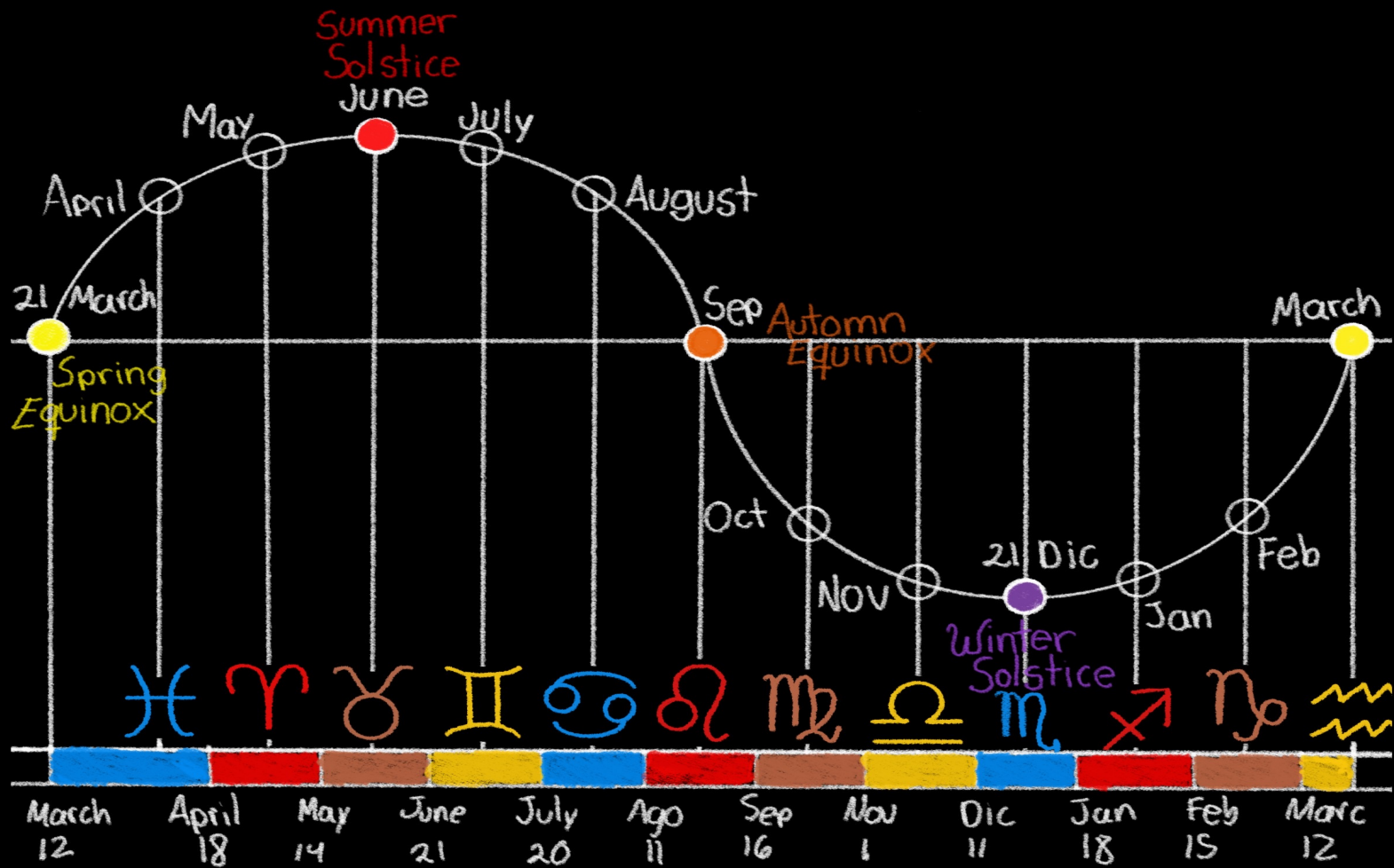






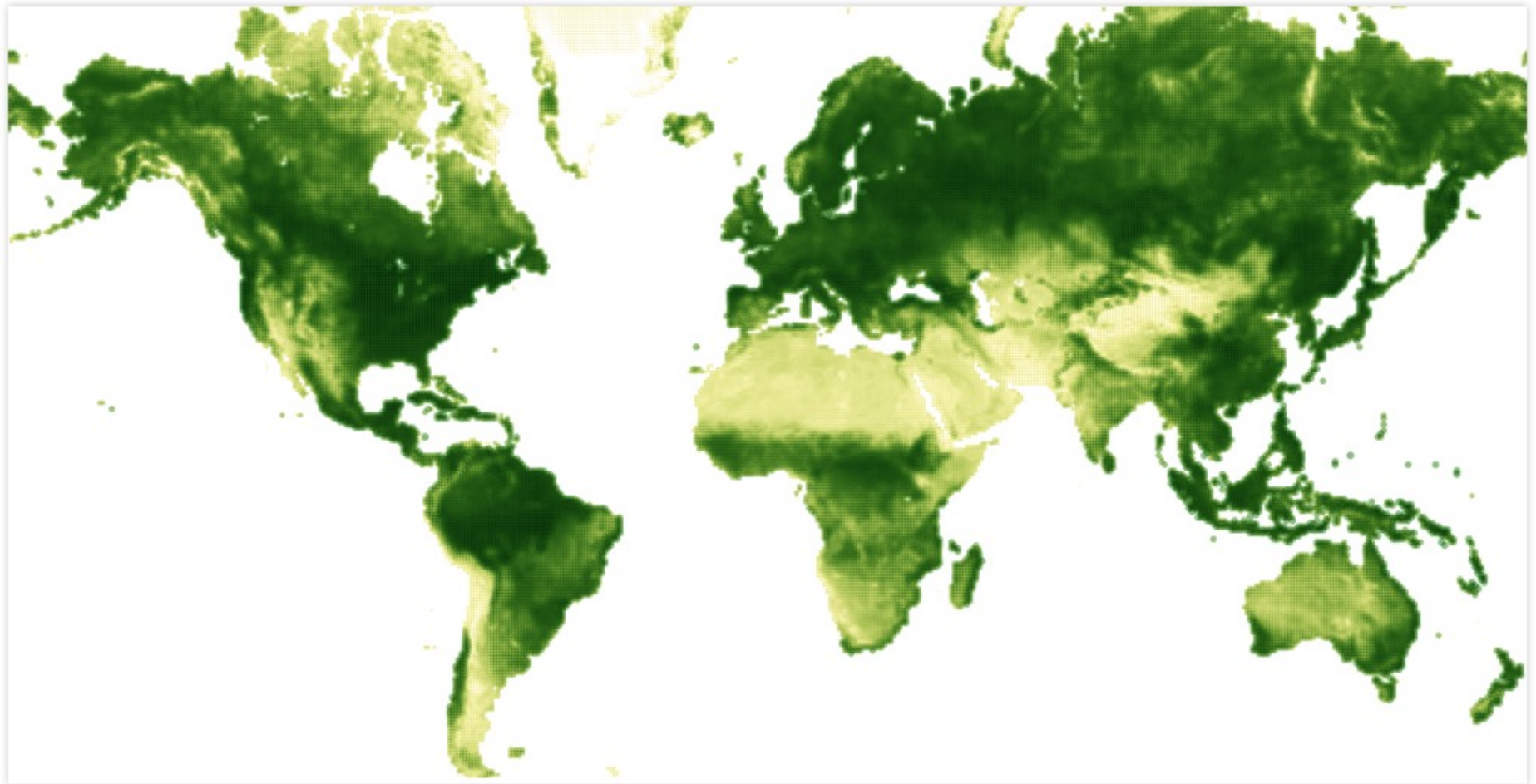
Corn life cycle

Corn life cycle



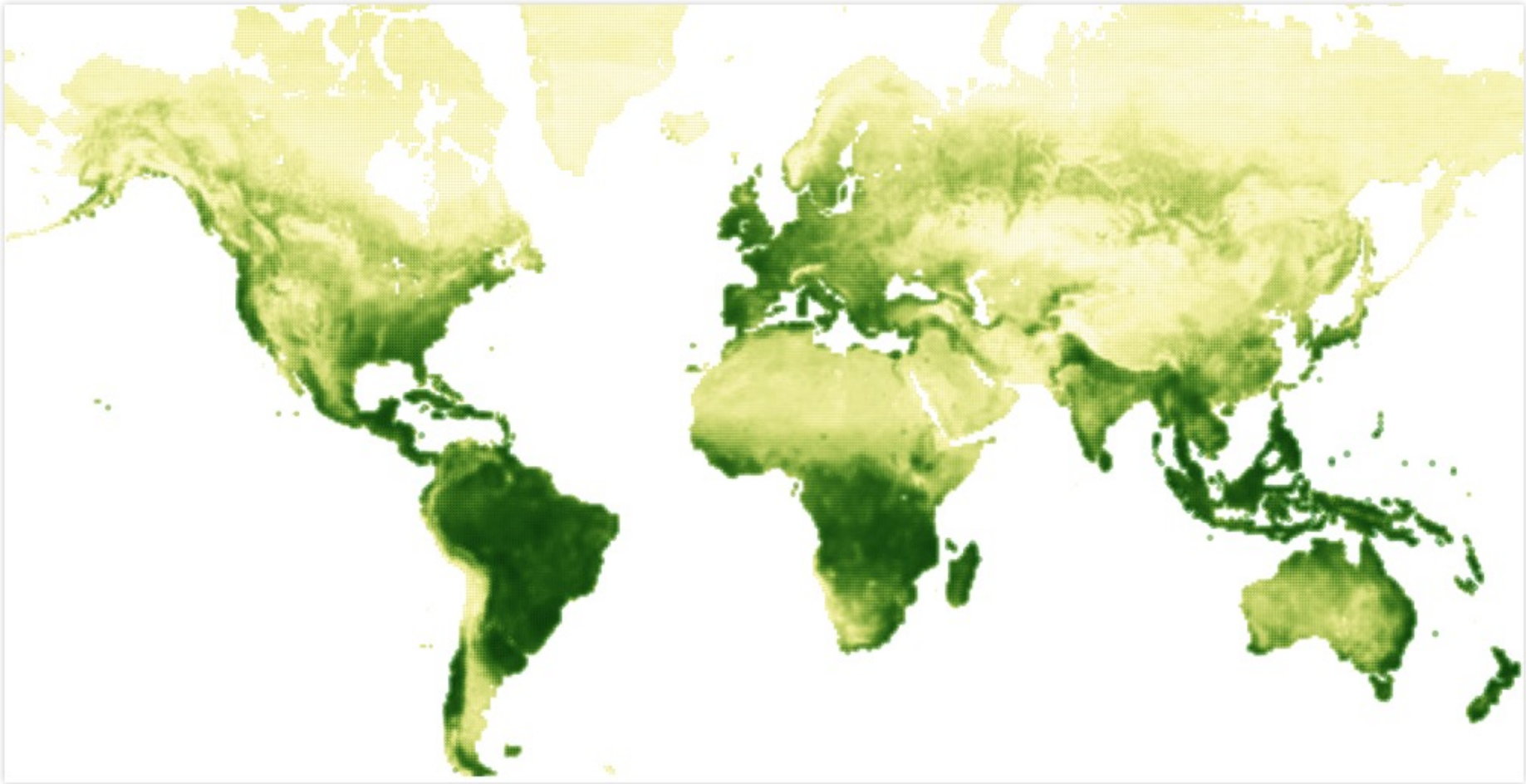
Corn life cycle

Week 30, July, 2016



low | arid Vegetation health | Greenness high | lush

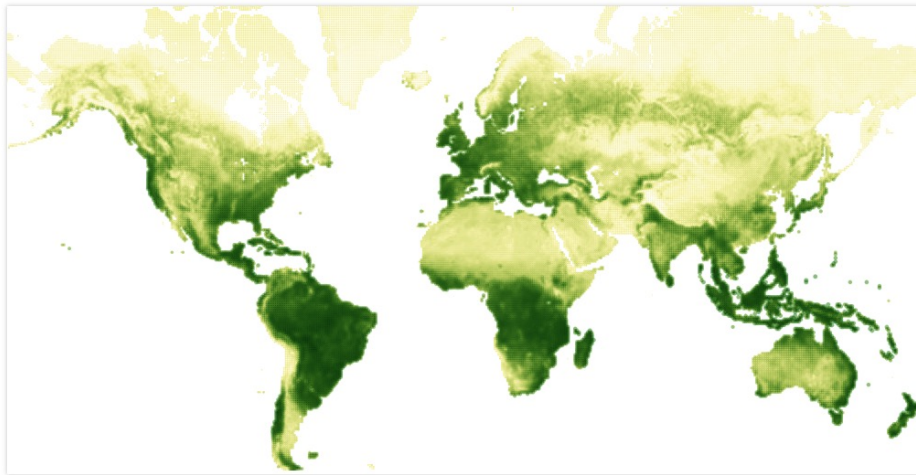
Week 8, February, 2016



low | arid **Vegetation health | Greenness** high | lush

restart the animation

Week 11, March, 2016

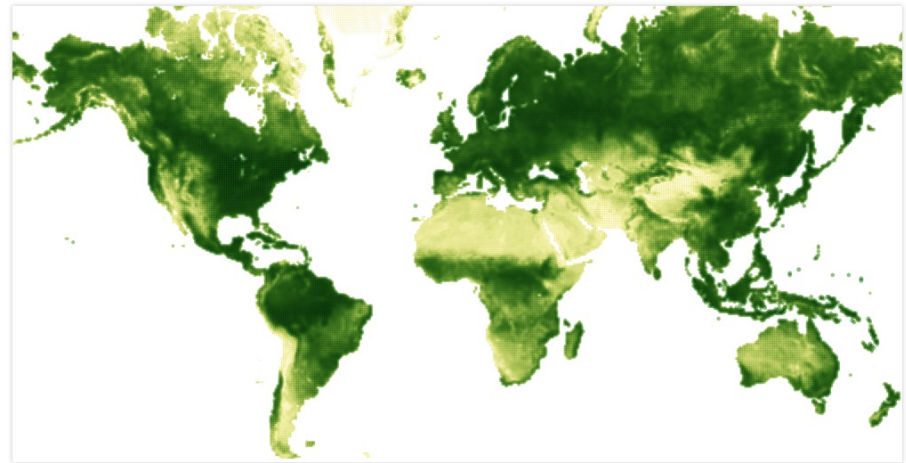


low | arid Vegetation health | Greenness high | lush

stop the animation

SPRING

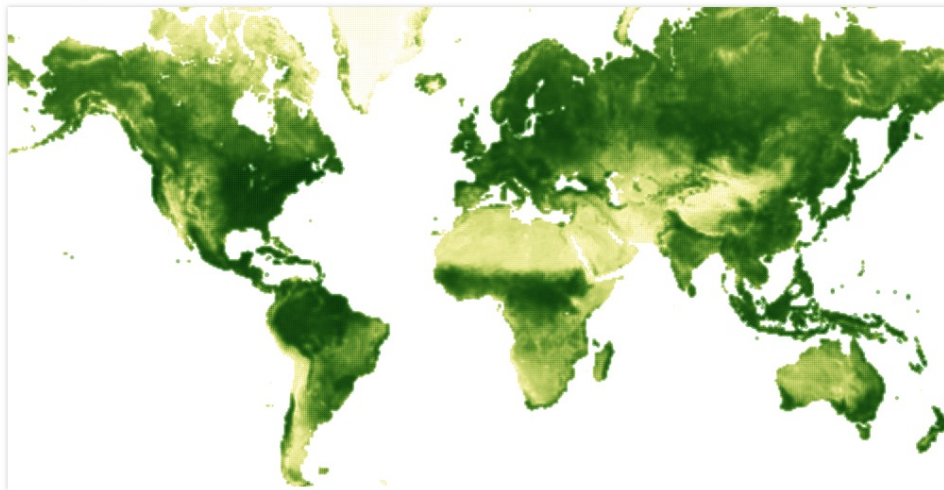
Week 30, July, 2016



low | arid Vegetation health | Greenness high | lush

SUMMER

Week 36, September, 2016

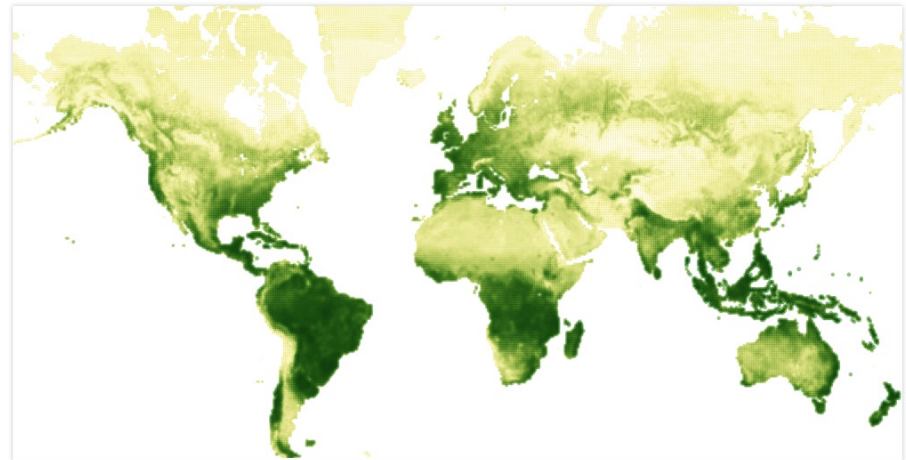


low | arid Vegetation health | Greenness high | lush

stop the animation

AUTUMN

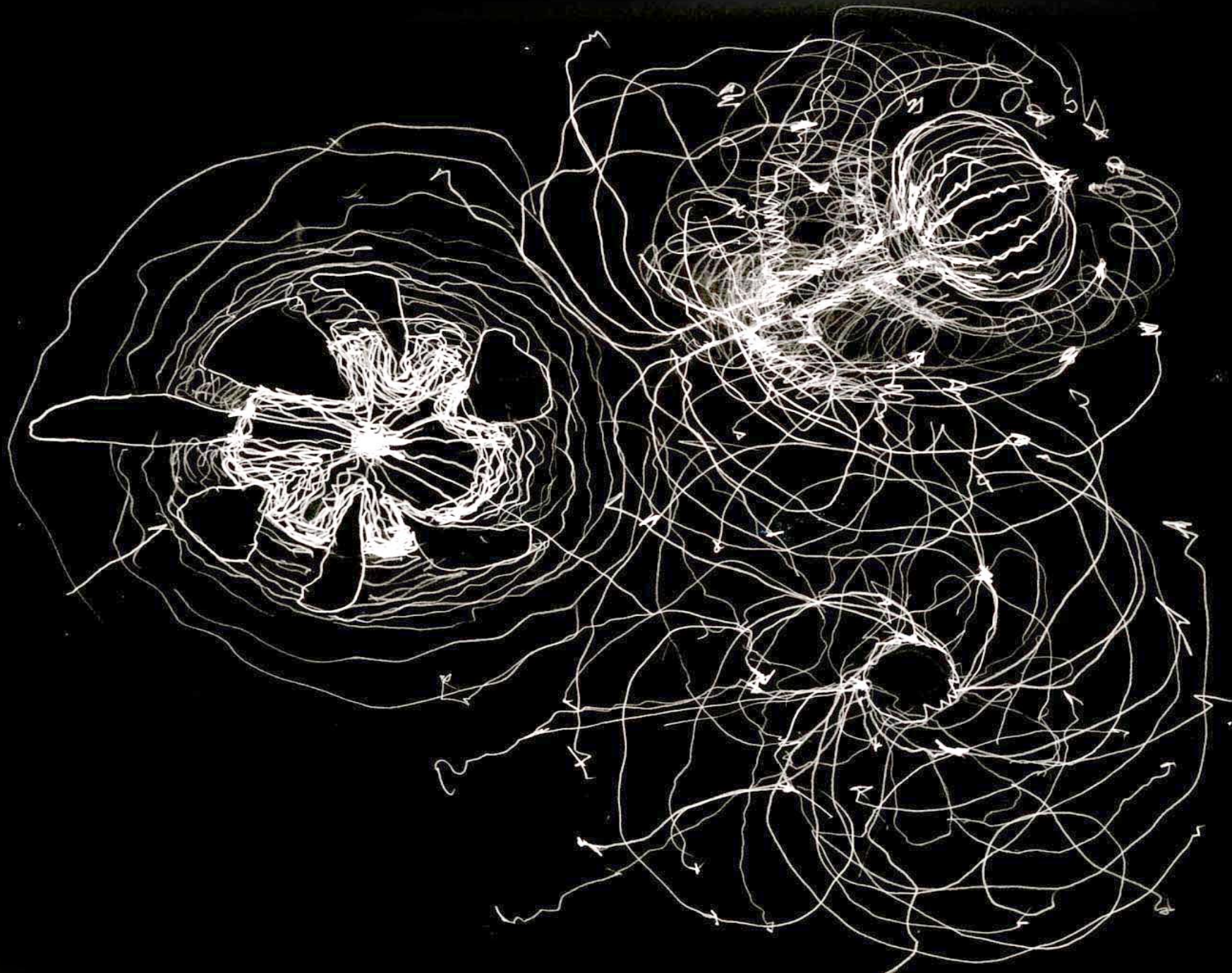
Week 8, February, 2016



low | arid Vegetation health | Greenness high | lush

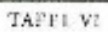
restart the animation

WINTER



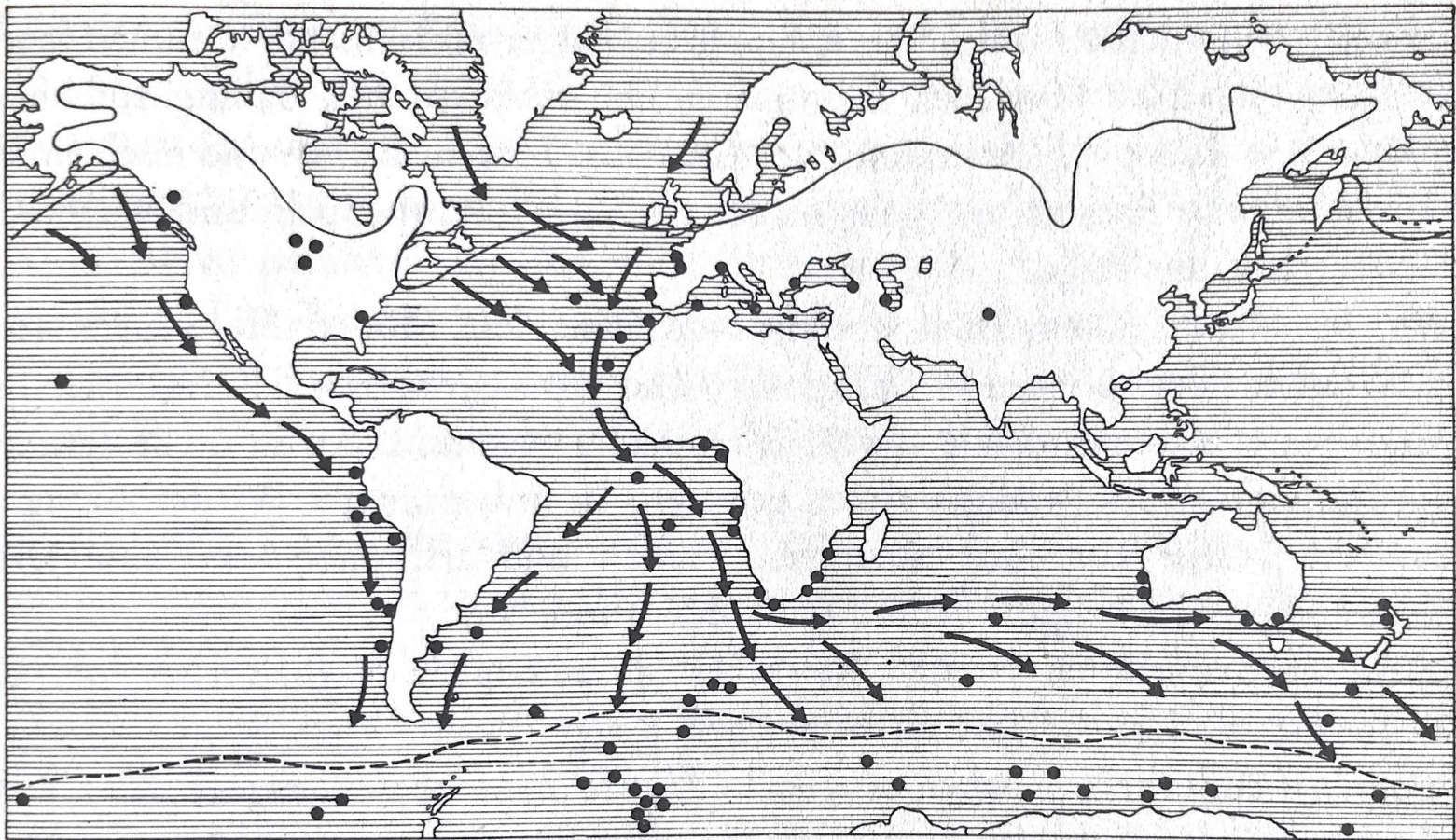








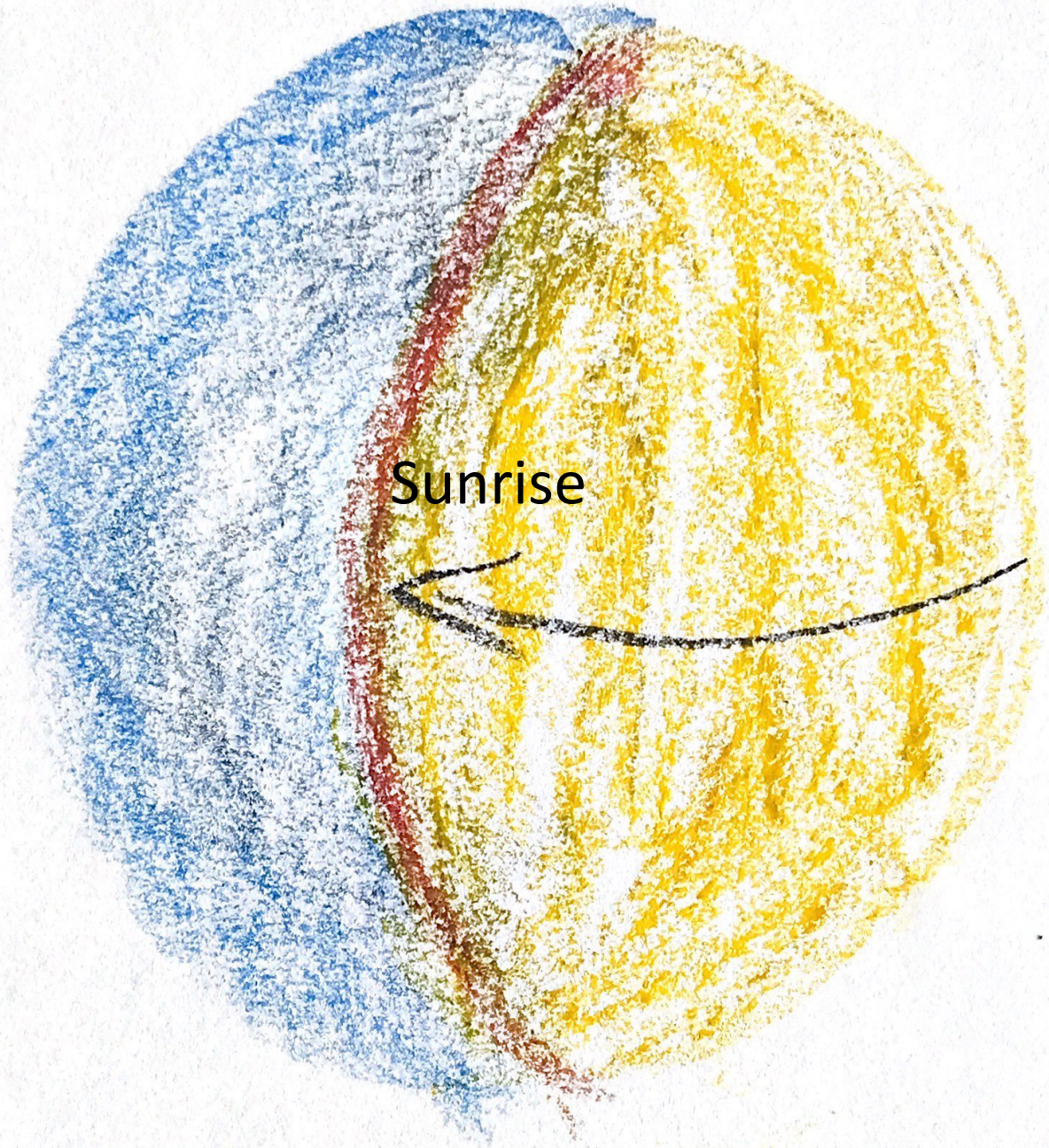
Migration from the arctic tern

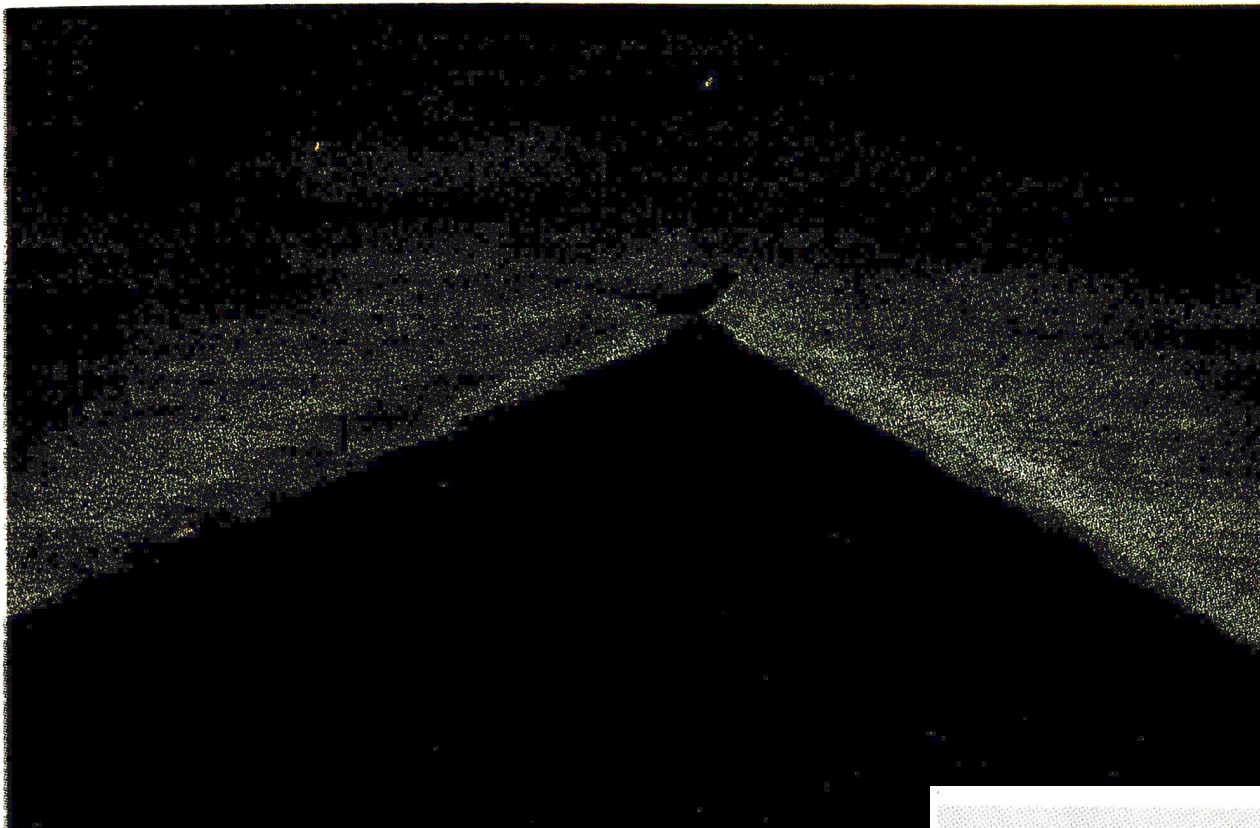


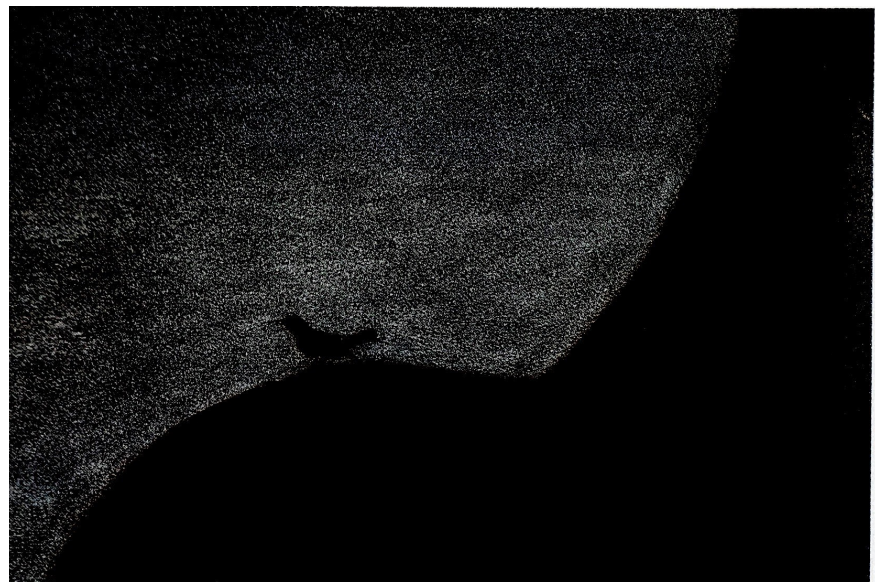
West

Sunrise

East









Sources

Slide 3, 6-9, 13: Eduardo Rincon

Slide 4+5: Babylonian Calendar: [Link](#)

Slide 10-12: Satellite breathing images: [Link](#)

Slide 15: Andreas Suchandtke

Slide 16, 18, 20: Jean-Michel Florin

Slide 17: Rudolf Steiner, GA 327

Slide 19: Storr, 1958

Slide 21-23: J. Bockemühl, Awakening to Landscape

Section for Agriculture at the Goetheanum

Hügelweg 59, 4143 Dornach, Switzerland

sarah.sommer@goetheanum.ch

Source reference

Pictures

- Jean-Michel Florin
- Birds from Awakening to landscape. J. Bockemühl

Migration map: Storr 1958

Drawings and graphs

- Eduardo Rincón
- Babylonian calendar:

https://www.ancientpages.com/2017/02/28/babylonians-and-sumerians-had-advanced-knowledge-of-astronomy/#google_vignette

-Satellite breathing images: <https://breathingearth.visualcinnamon.com>

Section for Agriculture at the Goetheanum

Hügelweg 59, 4143 Dornach, Switzerland

sarah.sommer@goetheanum.ch

<https://www.sektion-landwirtschaft.org/en/training/deepen-biodynamics/deepening-courses>

Exercise

Look for an animal – a bird or an insect – which have a rhythm, either during the day or even connected to a specific weather situation.

Observe this animal – for example every day at a similar time or at 2 different times – and describe your observations.

Good luck